

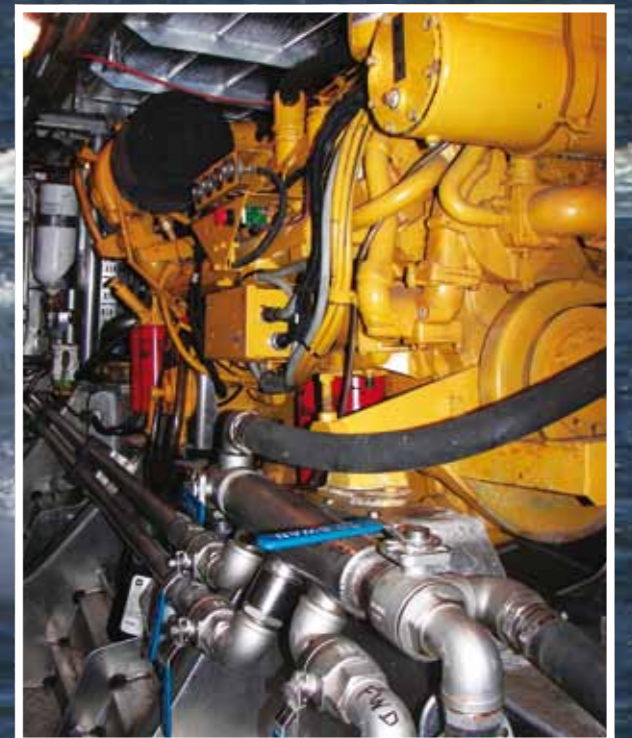


# Multi-Purpose Offshore Support Vessel 'No Limit'



[www.offshoreunlimited.com.au](http://www.offshoreunlimited.com.au)





# NO LIMIT

Built 2001 by Legend Boat Builders, Western Australia, Australia

## CLASSIFICATION

**Marine & safety:** WA USL 2B  
**M number:** 4252  
**Call sign:** VJT 6185

## MACHINERY

**Main engines** 2 x Caterpillar 3412TA 735kw  
**Gear box** 2 x ZF550 2 speed 1.99:1 & 2.23:1 Reduction With electronic trolling valves  
**Propeller** 2 x Mikado 5 blade  
**Auxiliary engines** 1 x Yanmar 30kva - 3 phase Mase  
1 x 8 kva - 1 phase  
**Bow Thruster** 1 x Hydraulic 40kw

## SPEED AND CONSUMPTION

**Maximum Speed** 24 knots  
(2164 rpm)  
**Economical Service Speed** 21 knots  
(1800 rpm)

## CAPACITIES

**Cargo** 12 tonne  
**Clear Deck** 8 m x 6 m  
**Power** 2 x 3 phase reefer plugs 32amps  
**Fuel** 14,900 litres  
**Water** 800 litres  
(Plus desalinator 5800 litres per day)

## DECK EQUIPMENT

**Hiab crane** 2000 kg @ 1.5 M  
750 Kg @ 4.5 M  
**Winch capstain** 1 tonne

## HULL

Aluminium mono hull  
Fendering on bow, stern and sides  
5.8 M open transom

## DIMENSIONS

**Length** LOA 21.5M  
**Beam** 6.0M  
**Draft** 1.5M

## BRIDGE

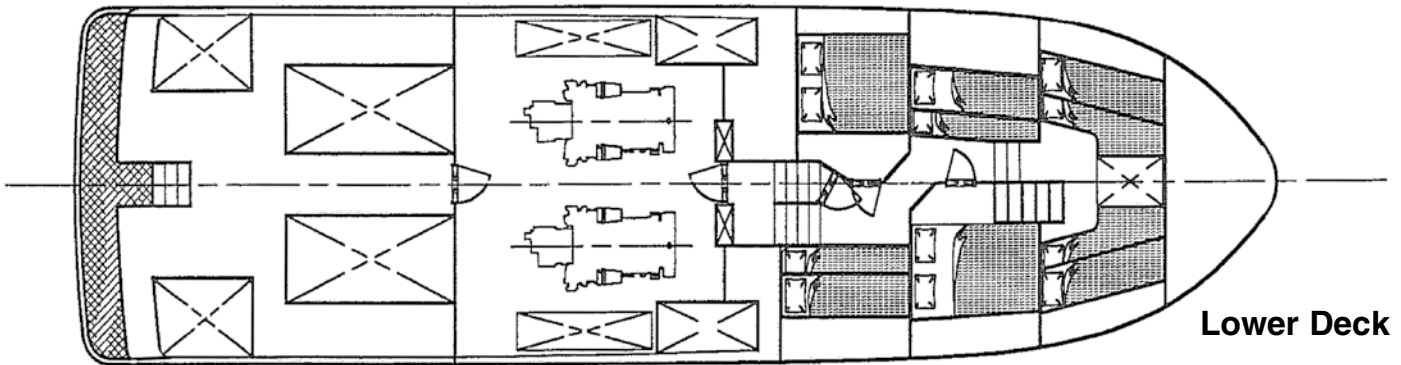
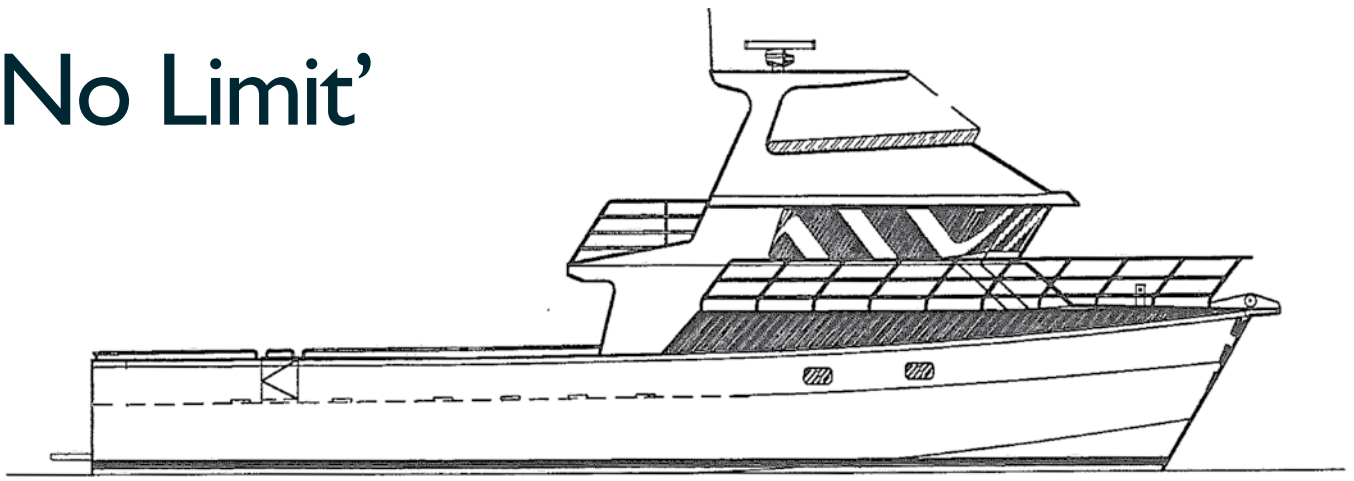
**Fully enclosed helm position**  
**Flybridge** Engine controls & 2nd steering  
**Radar Raymarine** 48nm, Furuno 48nm  
**Plotter** Maxsea, Raymarine C120  
**Gps** Furuno GP31, Raymarine C120  
**AIS** Receiver / Transmitter group 2  
**Sat communications** Iridium Satphone, Inmarsat C  
Thrane & Thrane, Inmarsat Fleet 33, Voice Fax Data  
**Auto pilot** Simrad AP28  
**HF radio** Furuno FS 1550au  
**VHF radio** Gme Gx548  
**VHF handhelds** Icom ICM 33 x 3  
**Searchlight** Aircraft landing light 240v  
**Compass** kvh gyrotrac, Plastimo magnetic  
**Fire monitoring** Avac mk iii FA2  
**Inverter** Seletronic sine wave 2000watt  
**EPIRB** McMurdo 406

## ACCOMMODATION

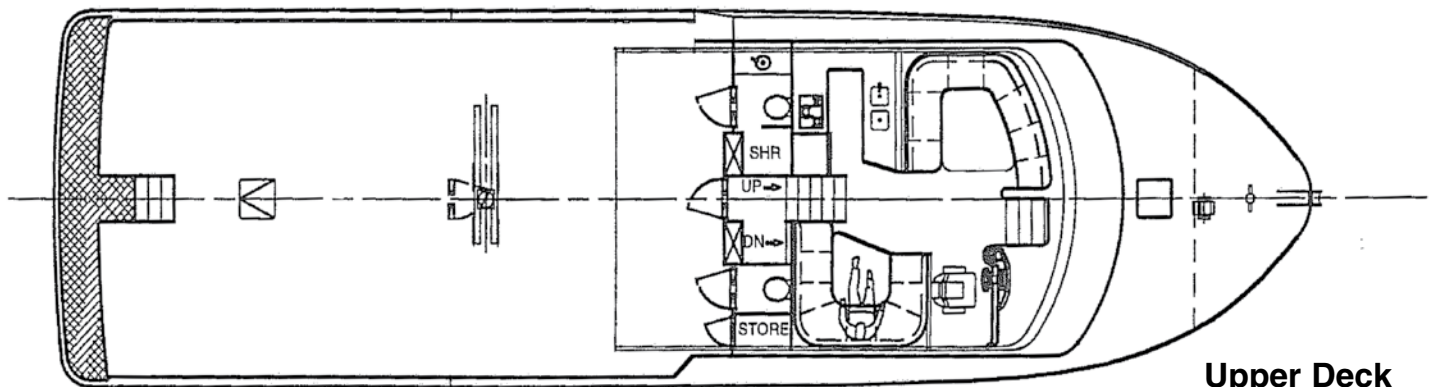
Total 12 berth, fully airconditioned. 12 Persons plus 2 crew overnight. 32 Persons plus 2 crew day trip (Can be increased with temporary permit). TV, Video, dvd player and cd in main saloon fully equipped galley, large freezer and refrigerator space. 2 X toilets and showers.



# 'No Limit'



Lower Deck



Upper Deck



**OFFSHORE UNLIMITED PTY LTD**

[info@offshoreunlimited.com.au](mailto:info@offshoreunlimited.com.au)

Tel 03 6235 7157 Fax 03 6235 7199

[www.offshoreunlimited.com.au](http://www.offshoreunlimited.com.au)





**OFFSHORE UNLIMITED PTY LTD**

[info@offshoreunlimited.com.au](mailto:info@offshoreunlimited.com.au)

Tel 03 6235 7157 Fax 03 6235 7199

[www.offshoreunlimited.com.au](http://www.offshoreunlimited.com.au)

